

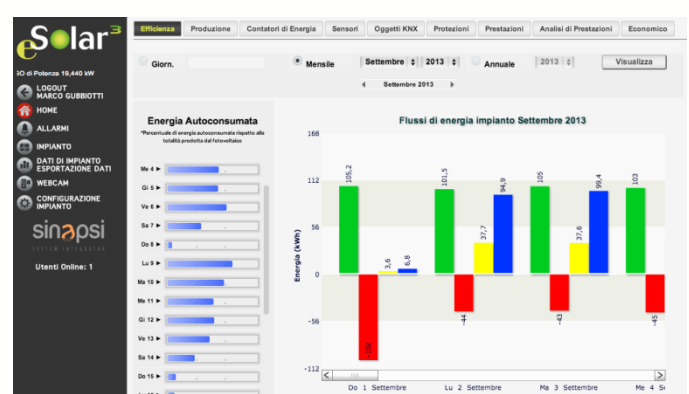
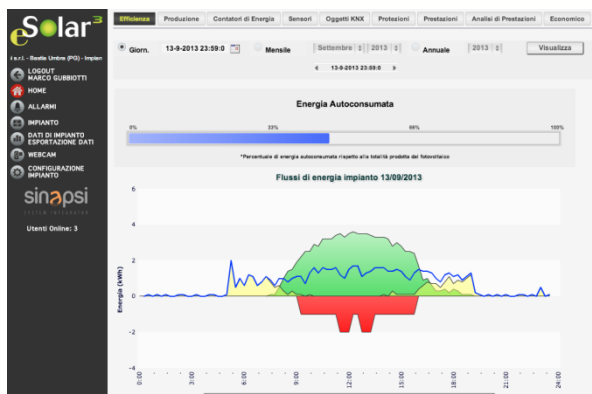
eSolar<sup>3</sup>
**INTEGRATED SYSTEM FOR ENERGY EFFICIENCY AND MONITORING OF PHOTOVOLTAIC SYSTEMS**


eSolar3 is an integrated device for the optimization of energy efficiency and monitoring of photovoltaic installations.

eSolar3 includes a home automation engine, using the KNX communication protocol, the only global standard open for home and building automation in accordance with CEI EN 50090 e ISO/IEC 14543.

eSolar3 links the powerful features of family eSolar products, the analysis and planned management of consumption optimization, typical of control systems for energy efficiency, thanks to the powerful synergy with the KNX motor of which is equipped with. Via web interface allows the setup of schedules and home automation operating logics related to PV production regimes. In simple and intuitive mode shows the trend analysis of the efficiency of the system, to allow the needed policies definition to increase consumption and maximization of production plant.

eSolar3 also supports the CEI 0-21 and CEI 0-16 norms. eSolar3 supporta inoltre le normative CEI 0-21 e CEI 0-16


**STRENGTHS**

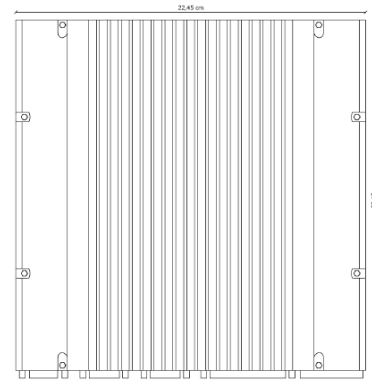
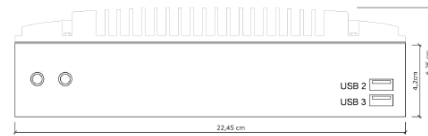
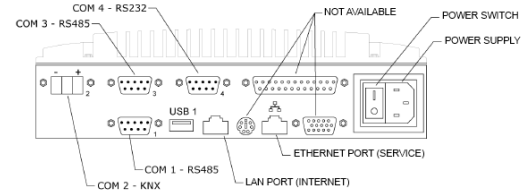
- Simple consultation of integrated web interface
- Easy installation and setup
- Integrated KNX home automation engine
- Flexibility on programming for the implementation of powerful political system of energy efficiency
- Compatibility with inverters, controllers strings, interface/general protections, multi-brand energy meters (after checking compatibility)
- O&M activities support tool
- Details of technical and economic information
- Management of historical data with the possibility to export multiformat data

**SYSTEM ELEMENTS**

- Standalone monitoring system
- Compatible with con cloud monitoring multiplant service SINAPSİ DATA SERVICE
- Visualization via web / tablet / smartphone via Web App Sinapsi+
- Accessories for home automation, communications, sensors

## TECHNICAL SPECIFICATIONS

<b>Color</b>	Silver
<b>Costruction</b>	Aluminum and Heavy-duty steel
<b>I/O Port system</b>	<ul style="list-style-type: none"> <li>• 2 x 9-pin D-Sub male connector, COM1, 3 for RS-485</li> <li>• 1 x 9-pin D-Sub male connector, COM4 for RS-232</li> <li>• 2 x RJ-45 connector for 10/100Base-T Ethernet</li> <li>• 3 x USB 2.0 connector</li> <li>• 1 x VAC power input connector</li> </ul>
<b>Data backup slot</b>	1 x type II CompactFlash™ slot
<b>System indicator</b>	<ul style="list-style-type: none"> <li>• 1 x green LED for system power-on</li> <li>• 1 x orange LED for memory activity</li> </ul>
<b>Power supply</b>	Input rating: 1. VAC100-240 universal/0.5A 2. Max power consumption, 70W 3. Typical power consumption, 16W
<b>Operating temperature</b>	-20°C to 50°C
<b>Storage temperature</b>	-20°C to 80°C
<b>Humidity</b>	10-90% RH (non-condensing)
<b>Vibration endurance</b>	<ul style="list-style-type: none"> <li>• 2Grms w/ CF (5-500Hz, X, Y, Z directions)</li> <li>• 0.5Grms w/ HDD (5-500Hz, X, Y, Z directions)</li> </ul>
<b>Weight</b>	2.15 Kg
<b>Certification</b>	CE
<b>Dimensions</b>	<ul style="list-style-type: none"> <li>• 225mm (8.86") (W)</li> <li>• 225mm (8.86") (D)</li> <li>• 51mm (2.01") (H)</li> </ul>



## ORDERING CODE: SIN.ESOLAR3

Integrated system for energy efficiency and monitoring of photovoltaic systems.

Specifications and pictures are subject to change without notice